

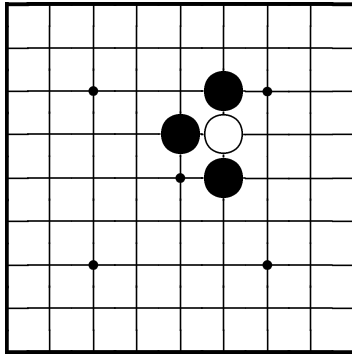
Certificate Level 1
Puzzle Sheets

British Go Association

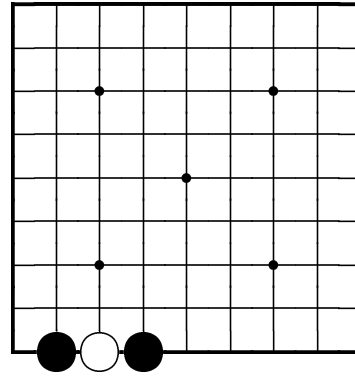
Name: _____

Capturing stones

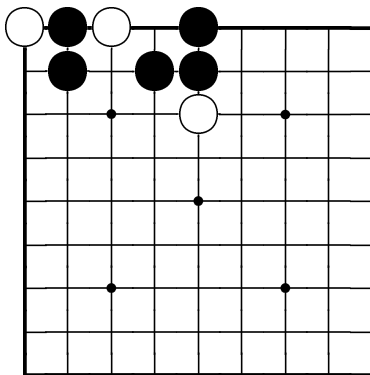
British Go Association certificate level 1, sheet 1



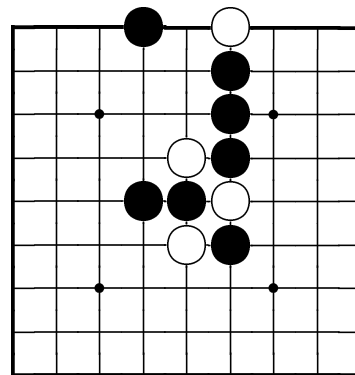
Black to play and take off a white stone.



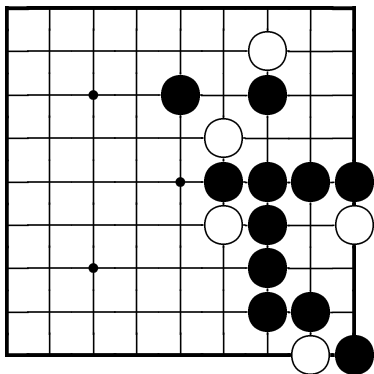
Black to play and take off a white stone.



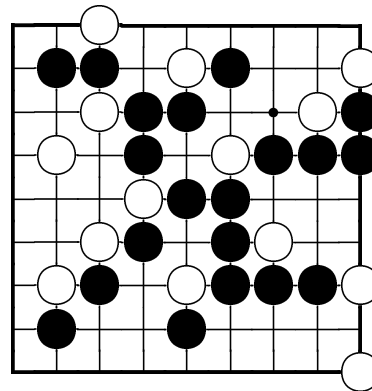
Black to play and take off a white stone.



Black to play and take off a white stone.



Black to play and take off a white stone.

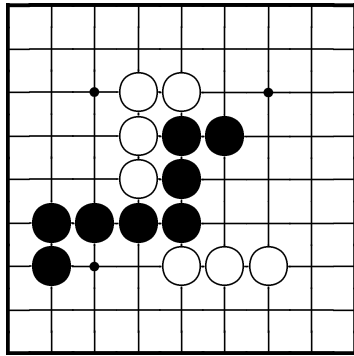


Black to play and take off a white stone.

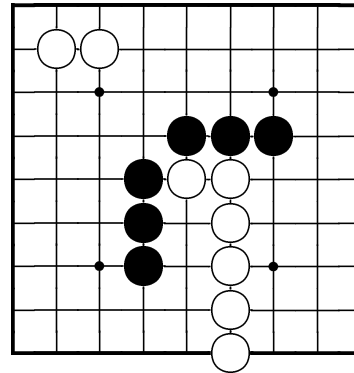
Name: _____

Groups and liberties

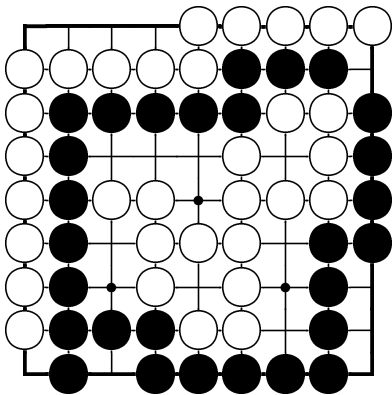
British Go Association certificate level 1, sheet 2



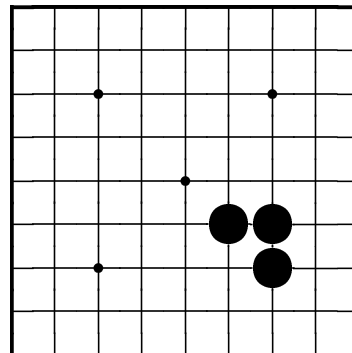
Are all the black stones all connected together?



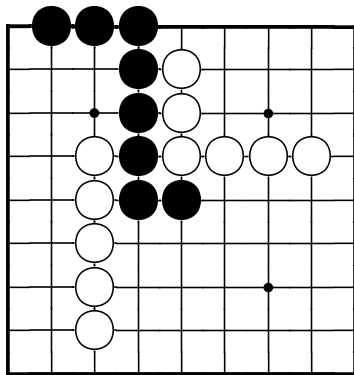
Are all the black stones all connected together?



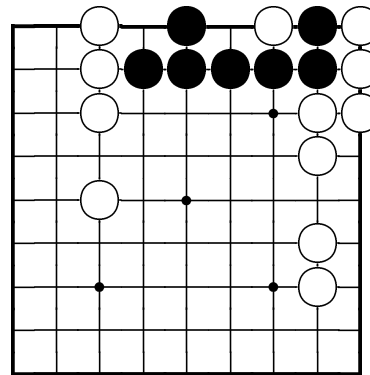
Are all the black stones all connected together?



How many liberties does the black group have?



How many liberties does the black group have?

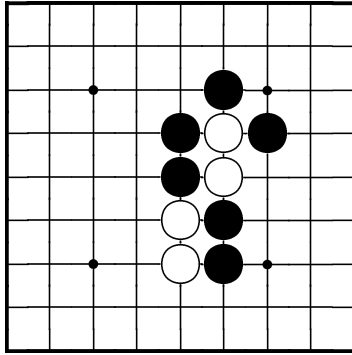


How many liberties does the black group have?

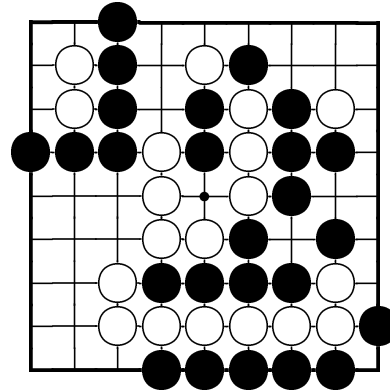
Name: _____

Capturing groups of stones

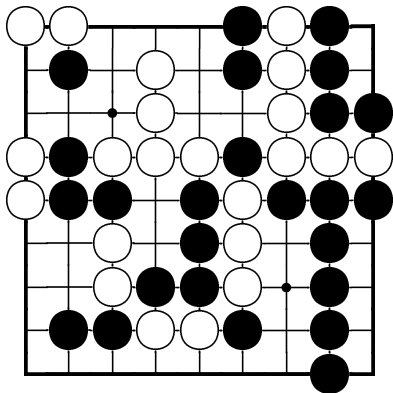
British Go Association certificate level 1, sheet 3



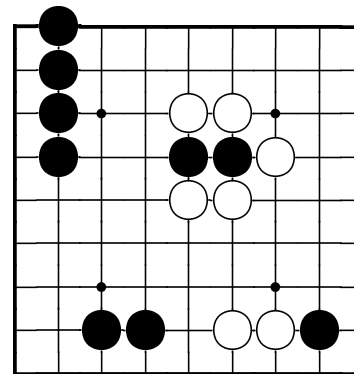
Black to play and take off two white stones.



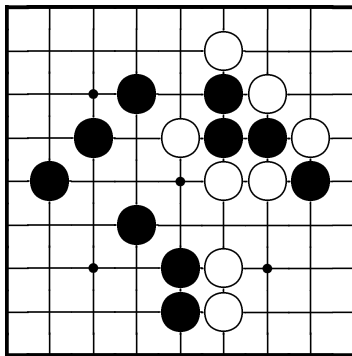
Black to play and take off some white stones.



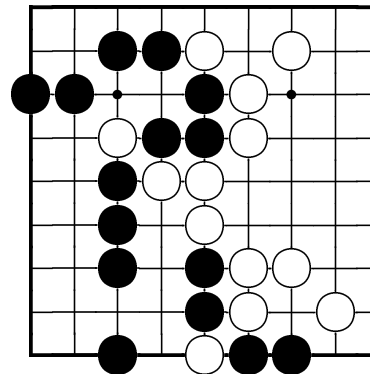
Black to play and take off some white stones.



Black to play and rescue the stones in atari.



Black to play and rescue the stones in atari.

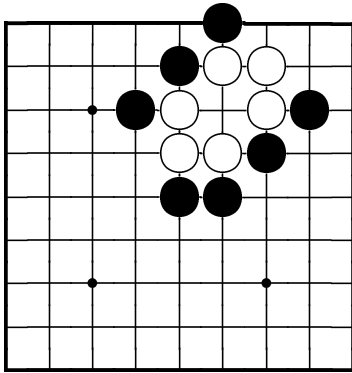


Black to play and rescue the stones in atari.

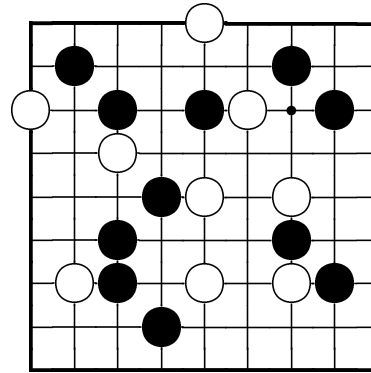
Name: _____

Atari and self-atari

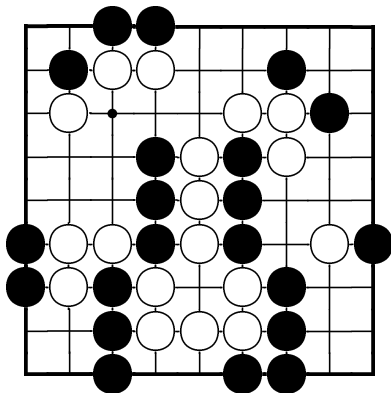
British Go Association certificate level 1, sheet 4



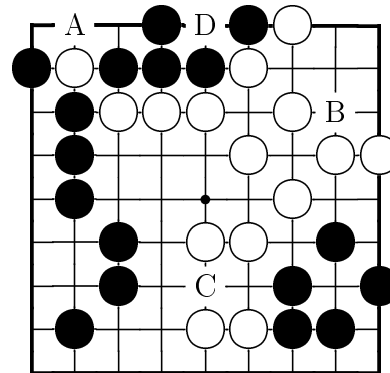
Black to play and put some white stones in atari.



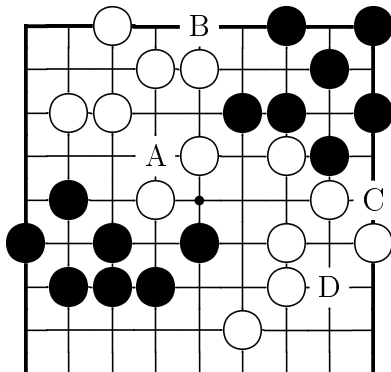
Which white stone can Black put in atari?



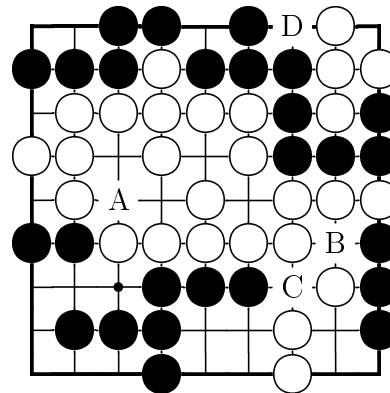
Black to play and put some white stones in atari.



Which Black play would put Black's own stones in atari – is it A, B, C or D?



Which Black play would put Black's own stones in atari – is it A, B, C or D?

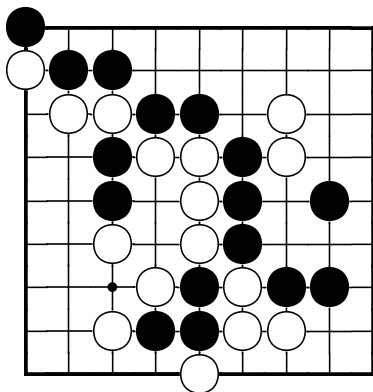


Which Black play would put Black's own stones in atari – is it A, B, C or D?

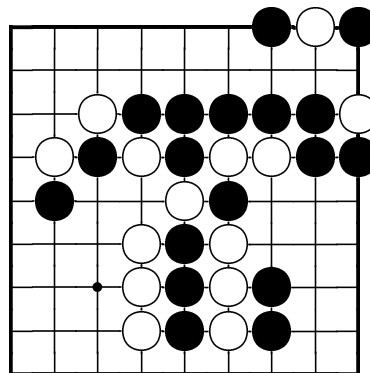
Name: _____

More about atari and capturing

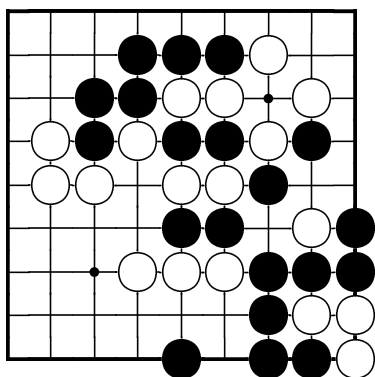
British Go Association certificate level 1, sheet 5



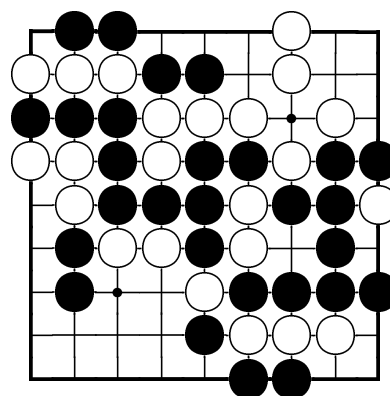
How many stones are in atari? Mark them all.



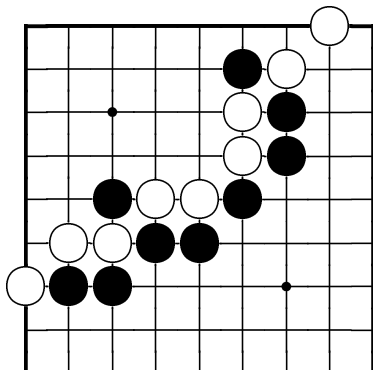
How many stones are in atari? Mark them all.



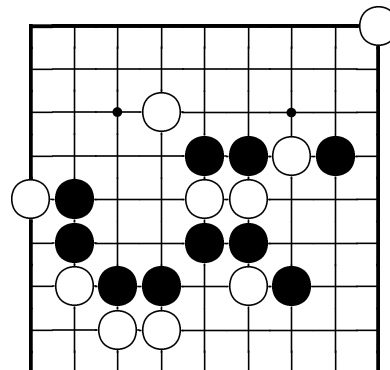
Mark the stones that should have been taken off.



Which stones are captured and should be taken off?



Show all Black plays which would put White in atari.

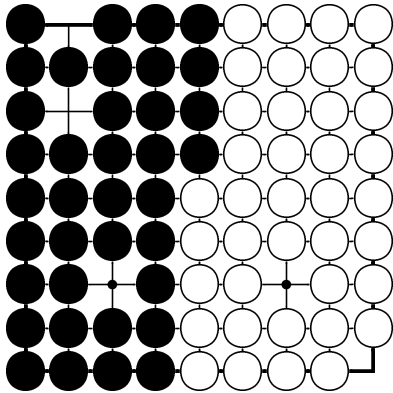


Show all Black plays which would put White in atari.

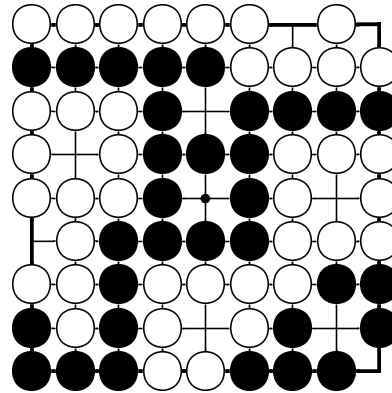
Name: _____

Counting the score

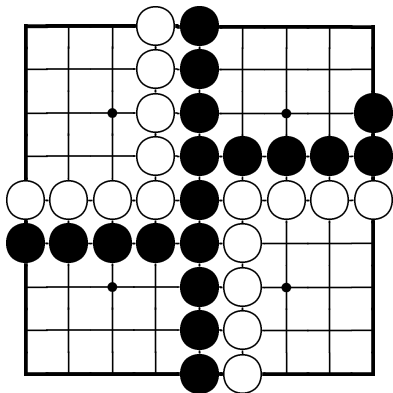
British Go Association certificate level 1, sheet 6



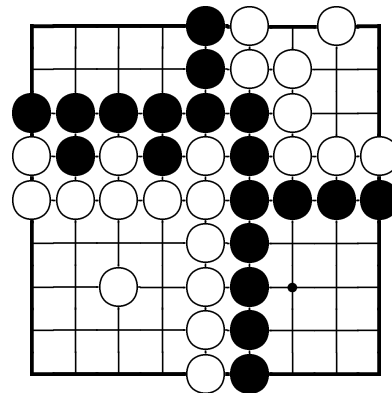
Who wins, and what is the score?



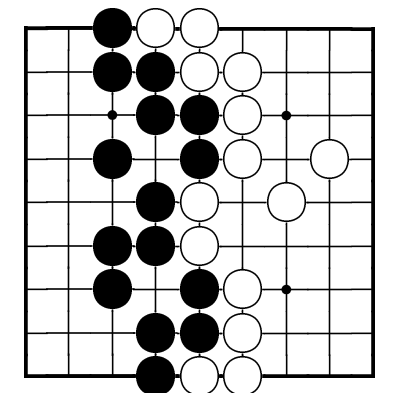
Who wins, and what is the score?



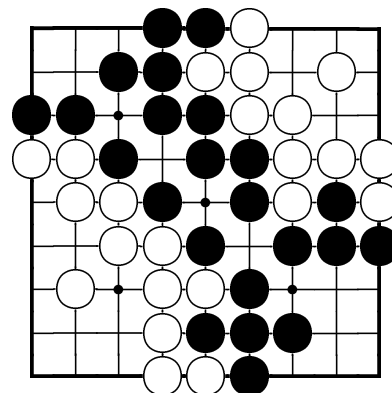
Who wins, and what is the score?



Who wins, and what is the score?



Who wins, and what is the score?

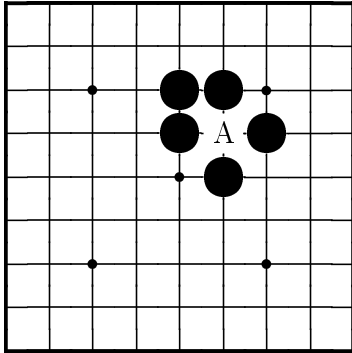


Who wins, and what is the score?

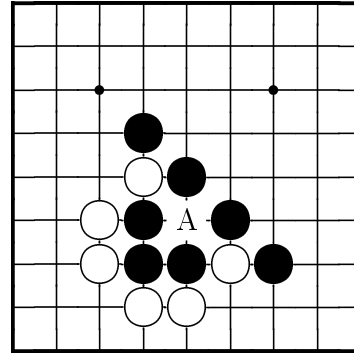
Name: _____

Illegal self-capture

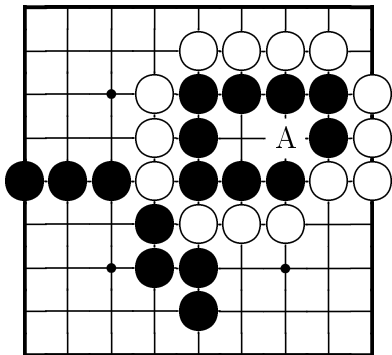
British Go Association certificate level 1, sheet 7



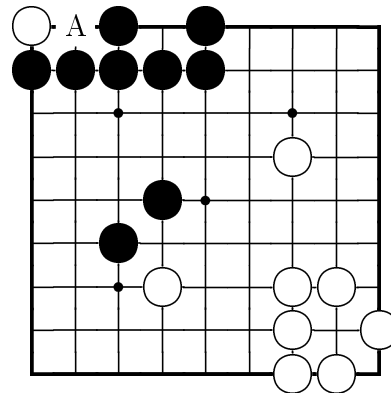
Can White play at A right now?



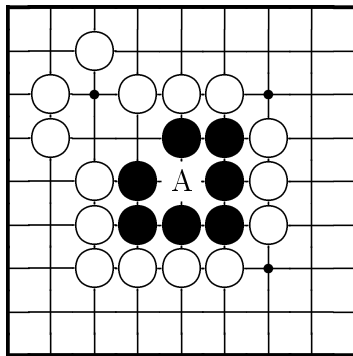
Can White play at A right now?



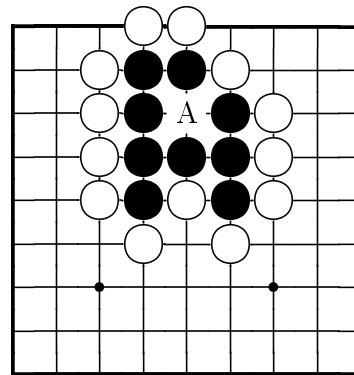
Can White play at A right now?



Can White play at A right now?



Can White play at A right now?

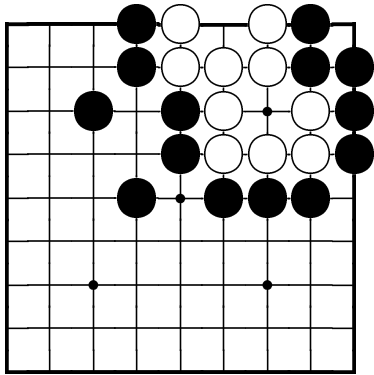


Can White play at A right now?

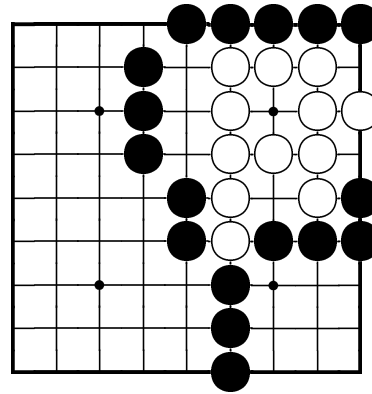
Name: _____

Two eyes

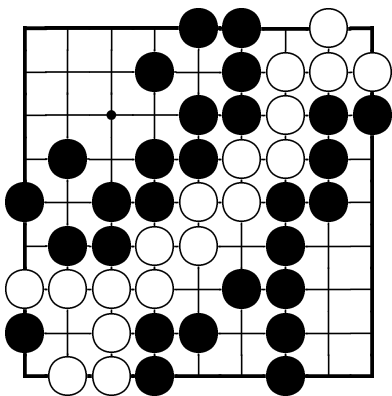
British Go Association certificate level 1, sheet 8



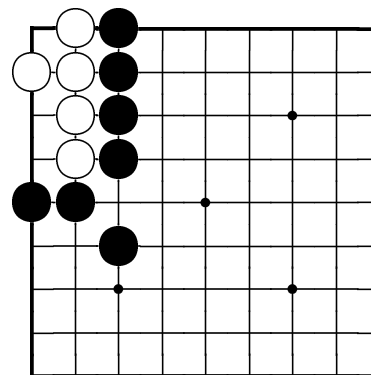
Has the white group got two eyes?



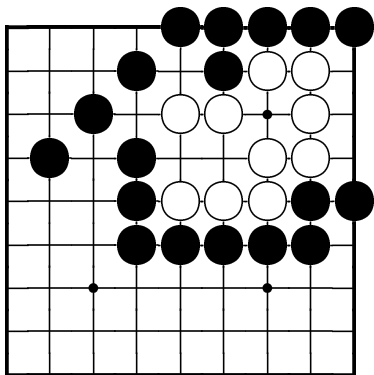
Has the white group got two eyes?



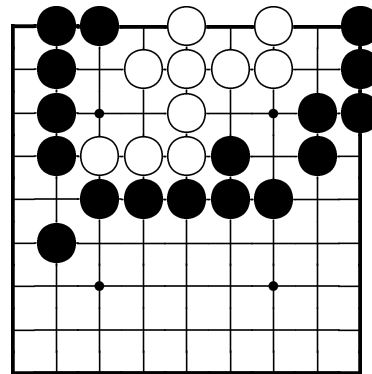
Has the white group got two eyes?



How can the white group make two eyes?



How can the white group make two eyes?

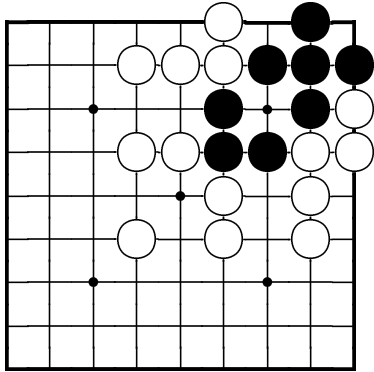


How can Black stop the white group from making two eyes?

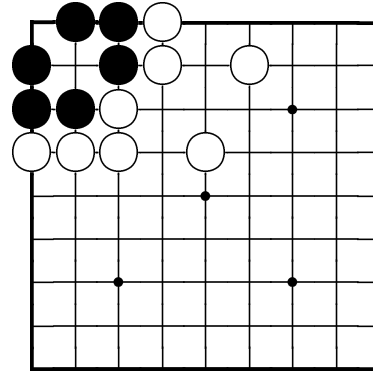
Name: _____

Real eyes and false eyes

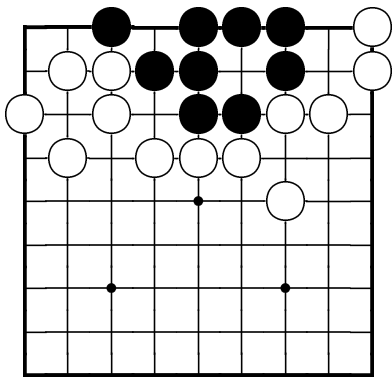
British Go Association certificate level 1, sheet 9



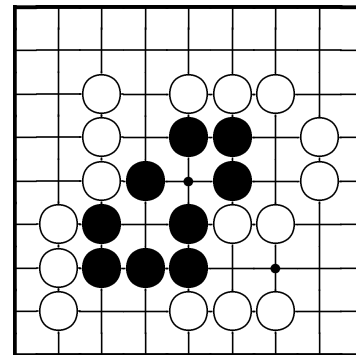
Has the black group got two real eyes?



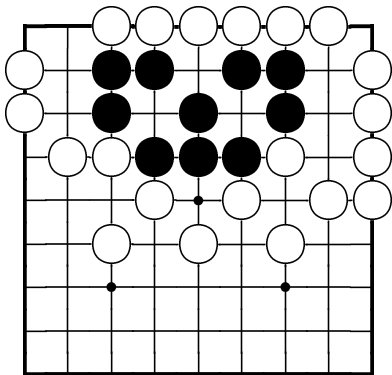
Has the black group got two real eyes?



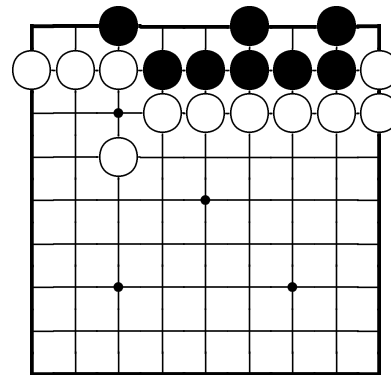
Has the black group got two real eyes?



How can White stop Black from making two real eyes?



How can Black make sure that the black group has two real eyes?

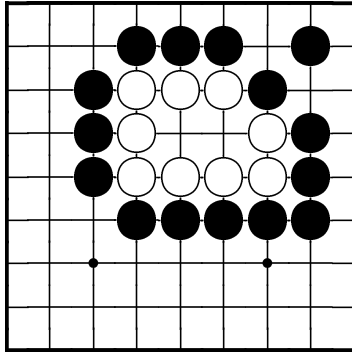


How can White stop the black group from making two real eyes?

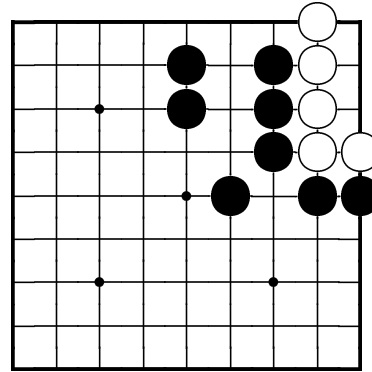
Name: _____

One big eye

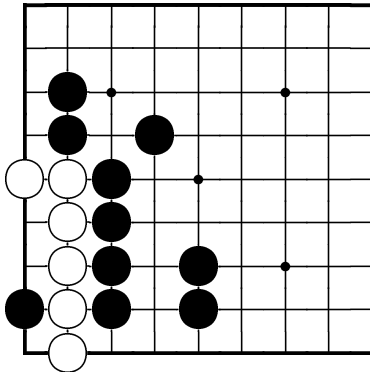
British Go Association certificate level 1, sheet 10



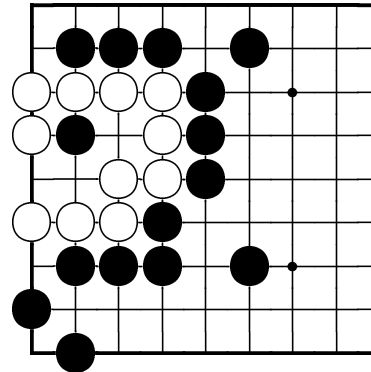
Can the white group make two eyes?



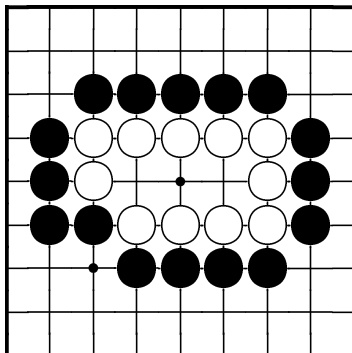
How can the white group make two eyes?



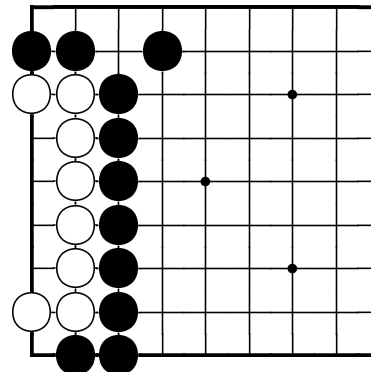
How can the white group make two eyes?



How can the white group make two eyes?



How can Black stop the white group from having two eyes?

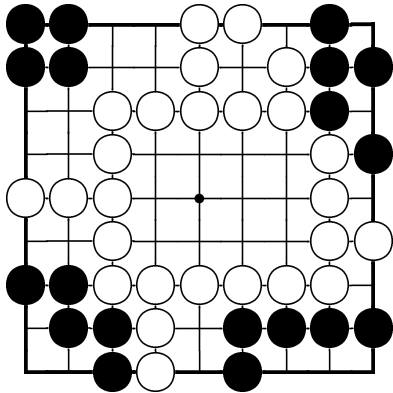


Can Black stop the white group from making two eyes?

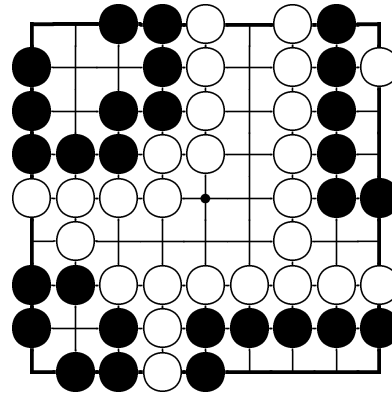
Name: _____

Shapes for making two eyes

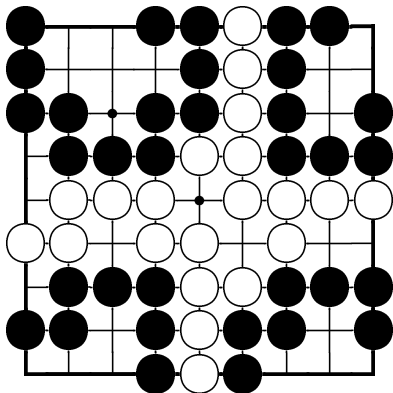
British Go Association certificate level 1, sheet 11



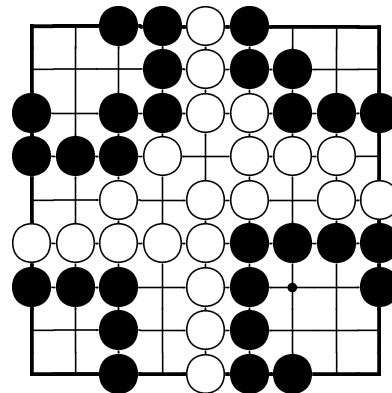
There are four black groups. Which are dead, alive, unsettled?



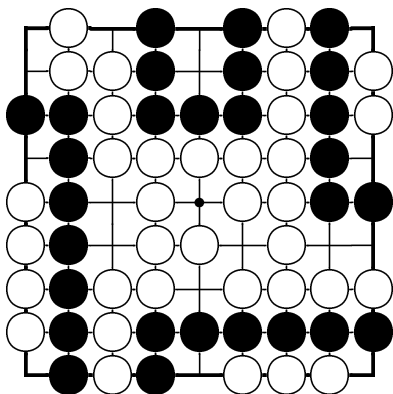
There are four black groups. Which are dead, alive, unsettled?



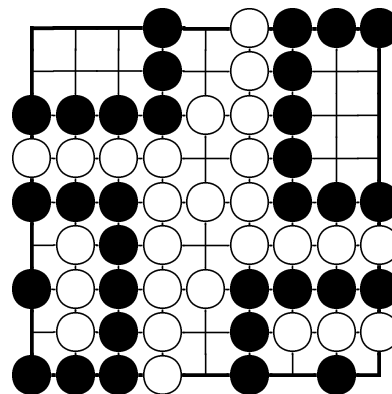
There are four black groups. Which are dead, alive, unsettled?



There are four black groups. Which are dead, alive, unsettled?



There are four black groups. Which are dead, alive, unsettled?



There are four black groups. Which are dead, alive, unsettled?

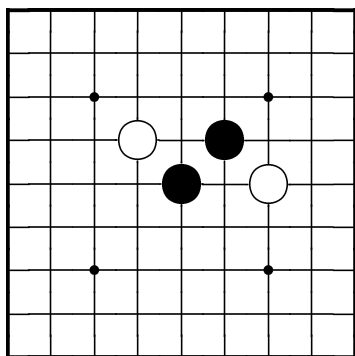
Certificate Level 2
Puzzle Sheets

British Go Association

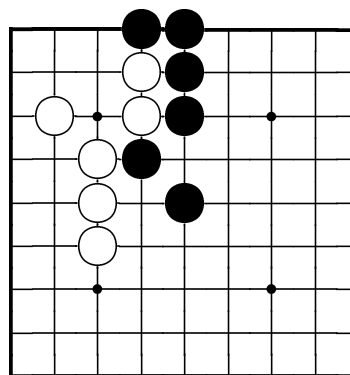
Name: _____

Cutting and connecting

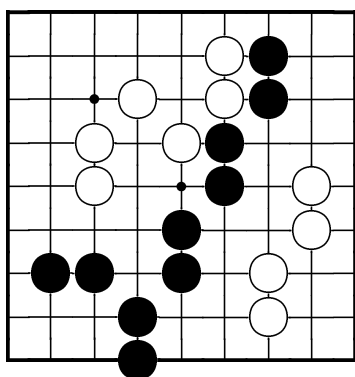
British Go Association certificate level 2, sheet 1



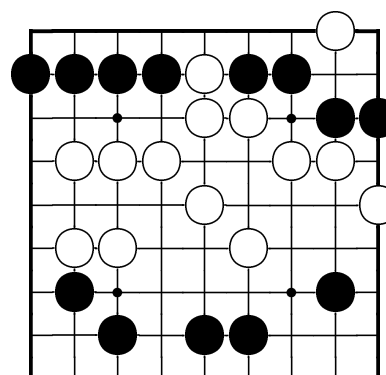
Can White cut the two black stones apart?



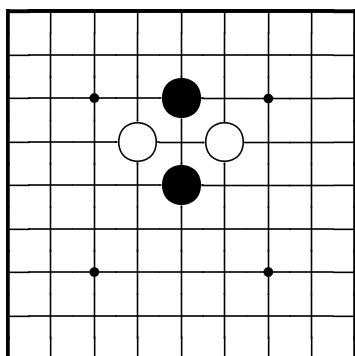
Can White cut the two single black stones apart?



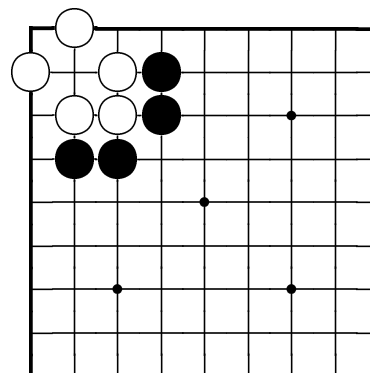
Can White cut the black group in two?



How can Black connect up his stones near the top to form one group?



What is Black's best play?

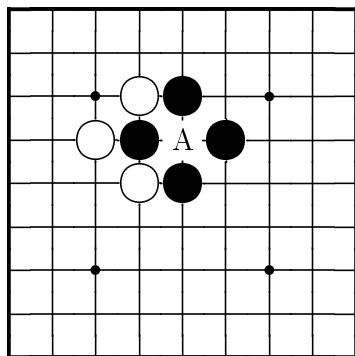


Where can White cut?

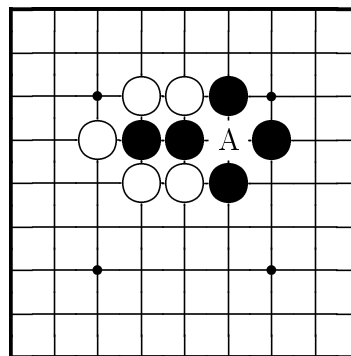
Name: _____

The ko rule

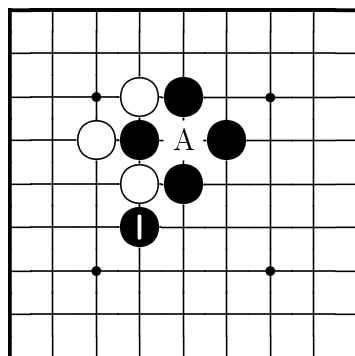
British Go Association certificate level 2, sheet 2



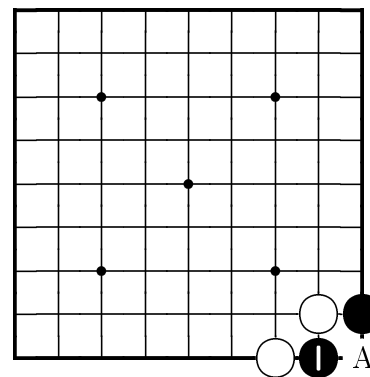
If White plays at A, is Black allowed to recapture right away?



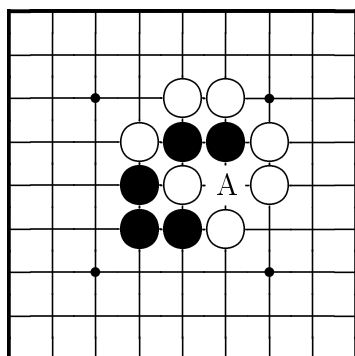
If White plays at A, is Black allowed to recapture right away?



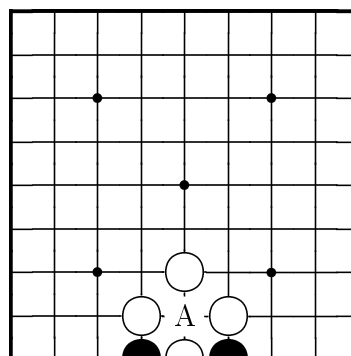
Black just played the stone marked 1. Can White play at A?



Black just played the stone marked 1 capturing a white stone. Can White play at A?



If Black plays at A, is White allowed to recapture right away?

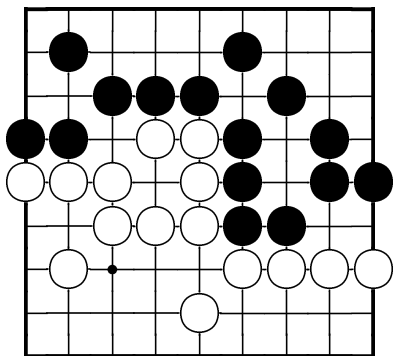


If Black plays at A, is White allowed to recapture right away?

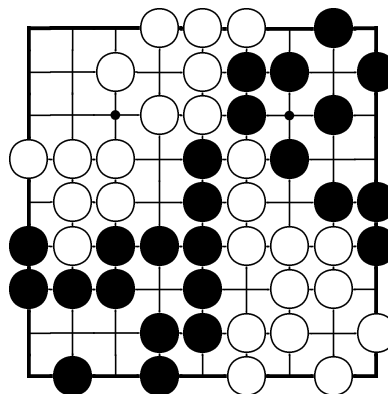
Name: _____

Neutral points and dead stones

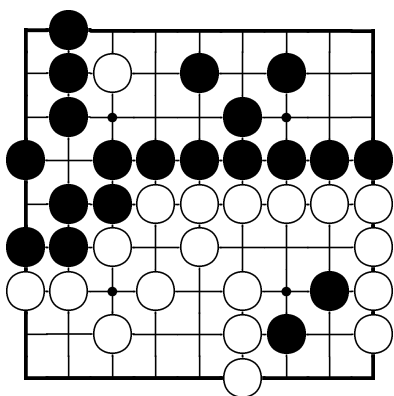
British Go Association certificate level 2, sheet 3



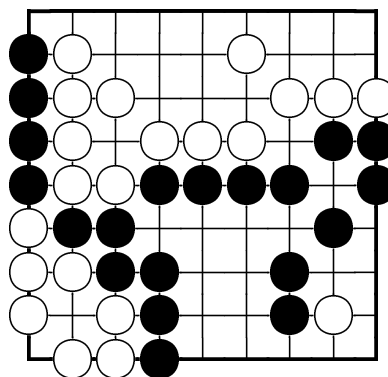
Which are the neutral points?



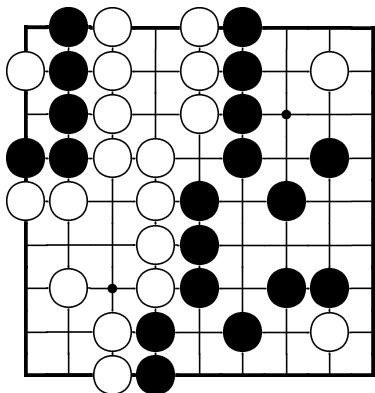
Where are all the neutral points? How many are there?



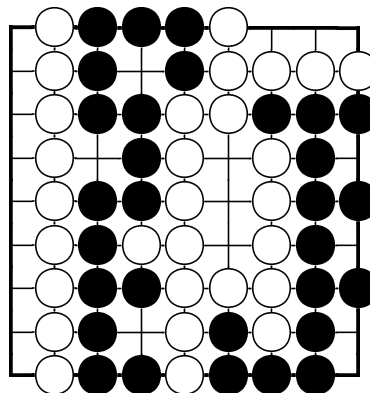
Which stones are dead?



Which stones are dead?



Which stones are dead?

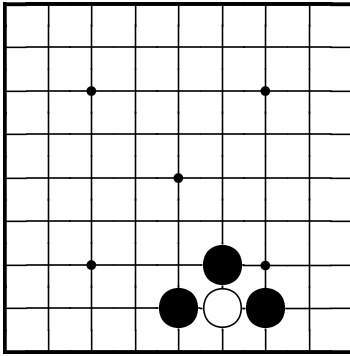


Which stones are dead?

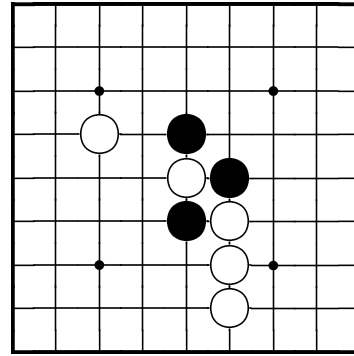
Name: _____

Basic ataris

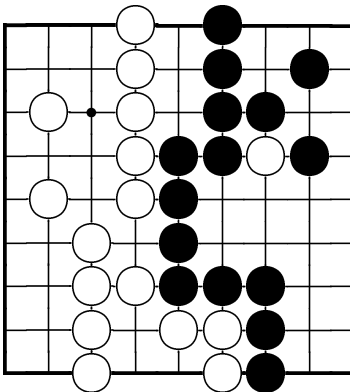
British Go Association certificate level 2, sheet 4



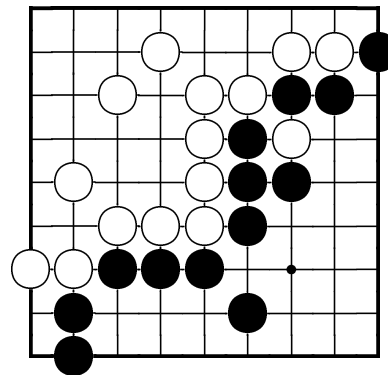
Is it worth it for White to try to get out of this atari?



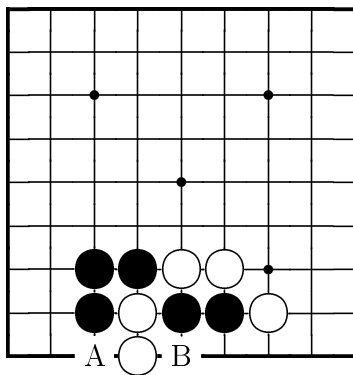
Is it worth it for White to try to get out of this atari?



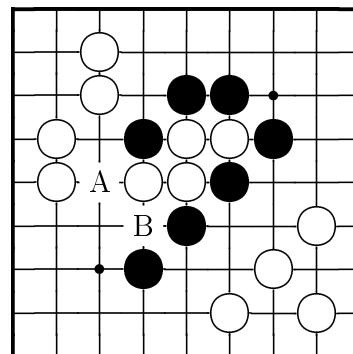
Is it worth it for White to try to get out of this atari?



Is it worth it for White to try to get out of this atari?



Which is the better way for Black to give atari - A or B?

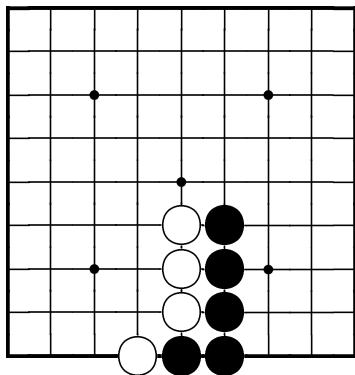


Which is the better way for Black to give atari - A or B?

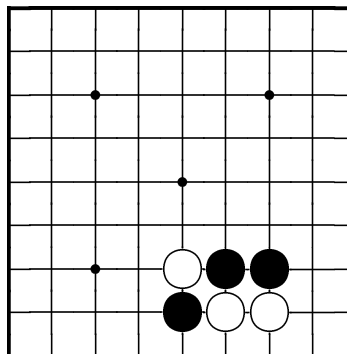
Name: _____

Edge-of-the-board tactics

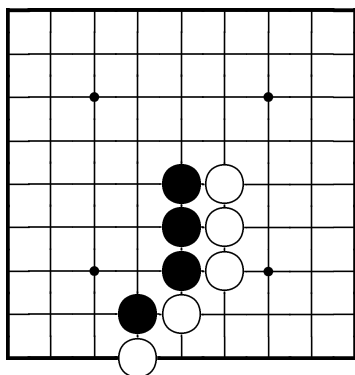
British Go Association certificate level 2, sheet 5



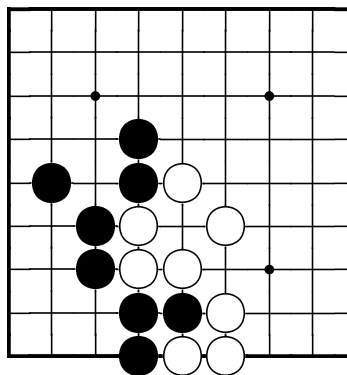
Black to play and win at least one white stone.



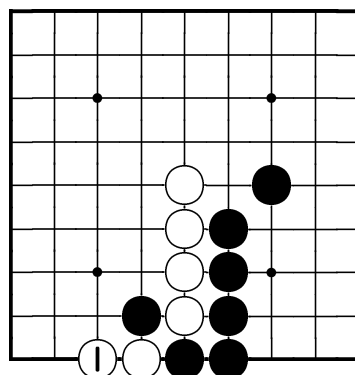
White to play and win at least one black stone.



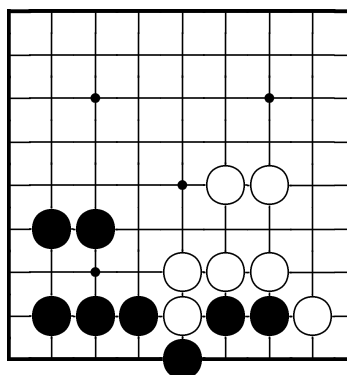
Black to play and win at least one white stone (two possible answers).



White to play and win at least one black stone.



White played at 1, but how can Black stop this stone from escaping?

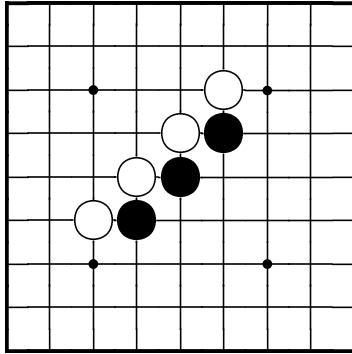


White to play and win at least one black stone (two possible answers).

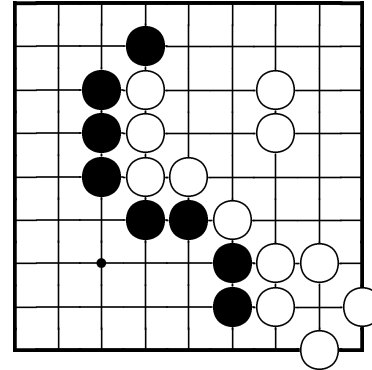
Name: _____

Double ataris and sequences of ataris

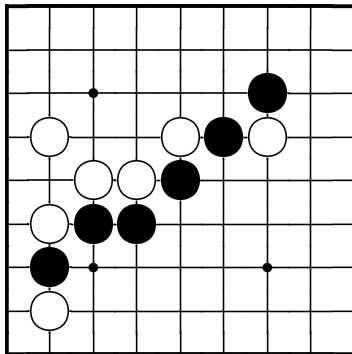
British Go Association certificate level 2, sheet 6



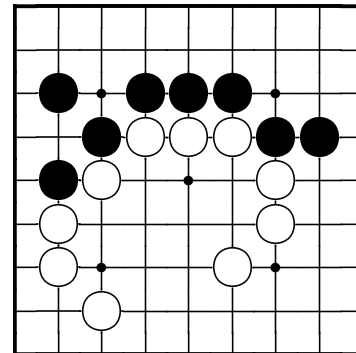
Where can Black play a double atari?



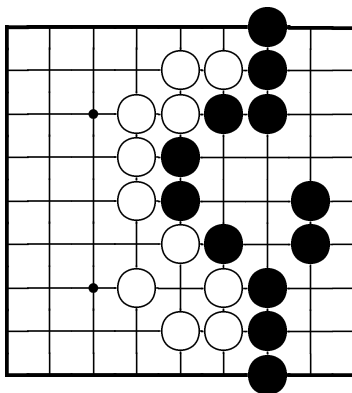
Black to play an atari which threatens another atari.



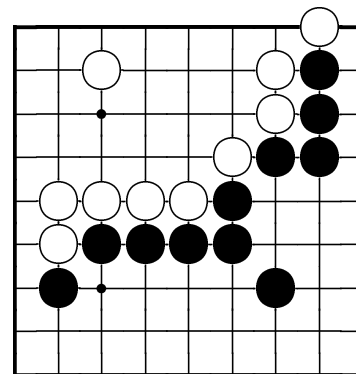
Where can White play a double atari?



Black to play an atari which threatens another atari.



How can White break into Black's territory?

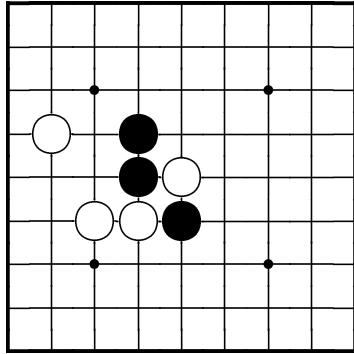


Black to play and win at least one stone.

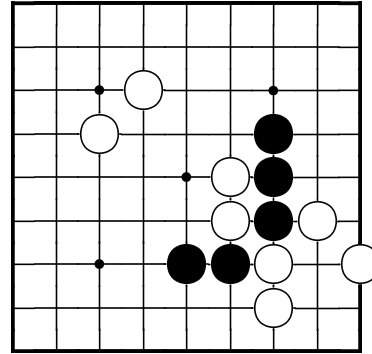
Name: _____

Ladders and nets

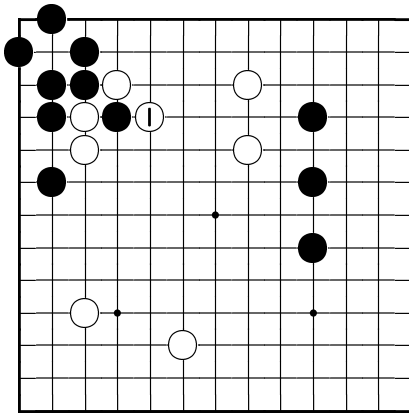
British Go Association certificate level 2, sheet 7



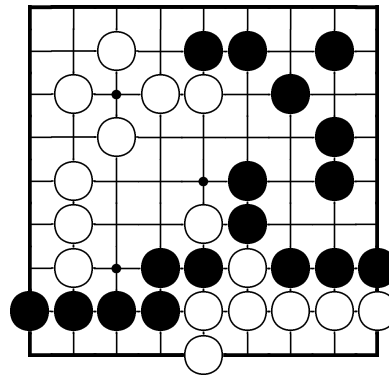
How can Black win one white stone?



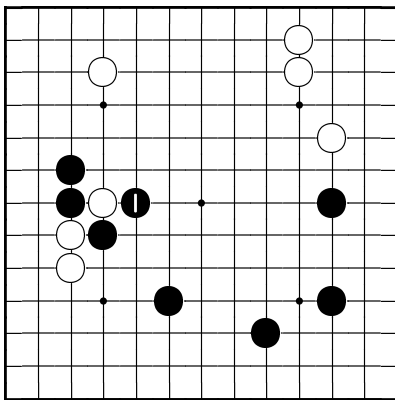
How can Black win two white stones?



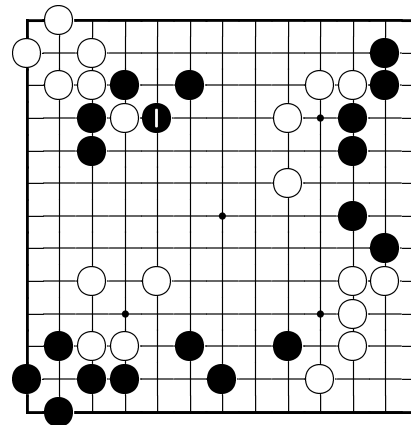
Does the ladder work for White?



How can Black win a white stone?



Does the ladder work for Black?

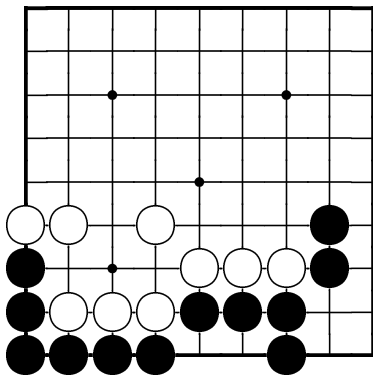


Does the ladder work for Black?

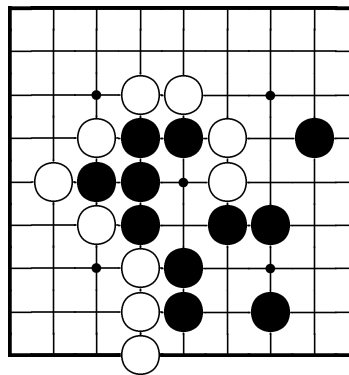
Name: _____

Sacrifice tactics

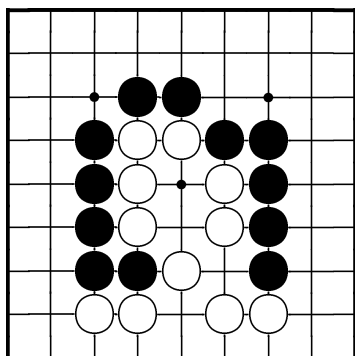
British Go Association certificate level 2, sheet 8



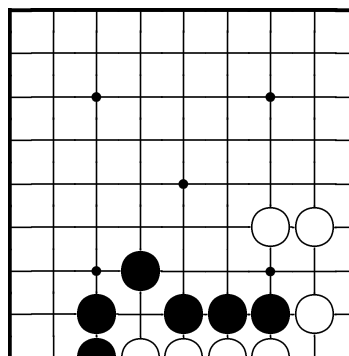
White to play and win some black stones.



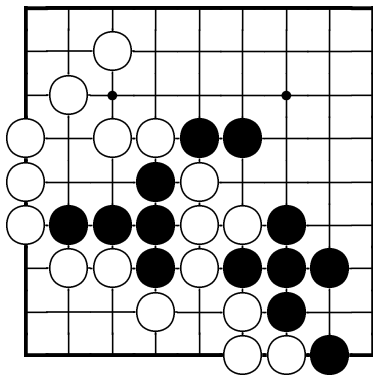
White to play and win some black stones.



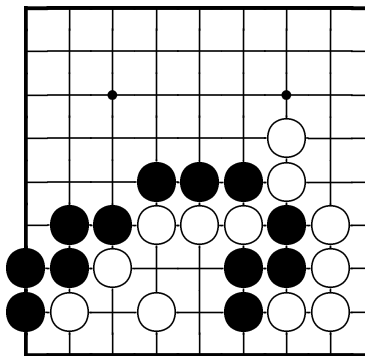
Black to sacrifice a stone so as to win some white ones.



Black to sacrifice a stone so as to win some white ones.



Black to sacrifice a stone so as to win some white ones.

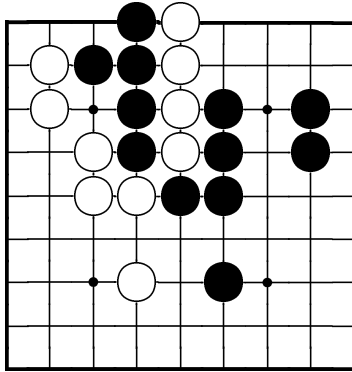


Black to sacrifice a stone so as to win some white ones.

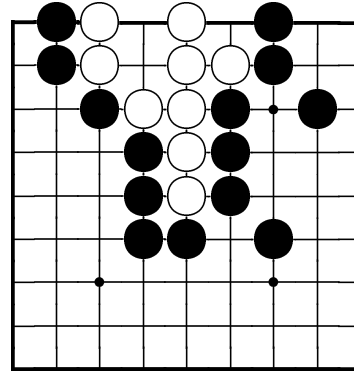
Name: _____

Strong and weak

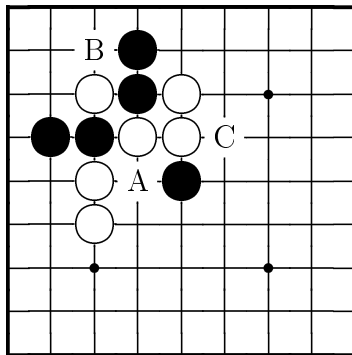
British Go Association certificate level 2, sheet 9



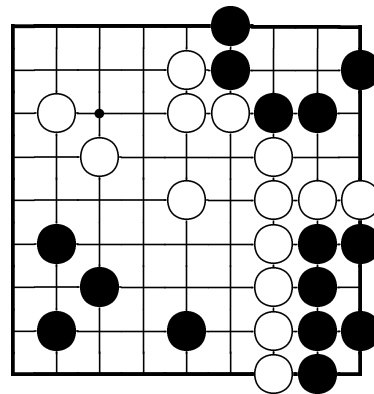
How can White save the weak white group?



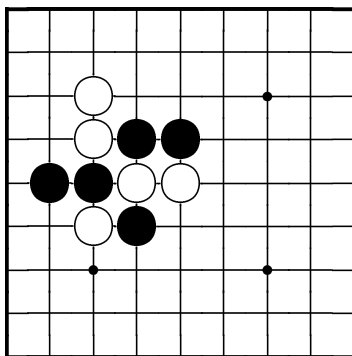
How can White save the weak white group?



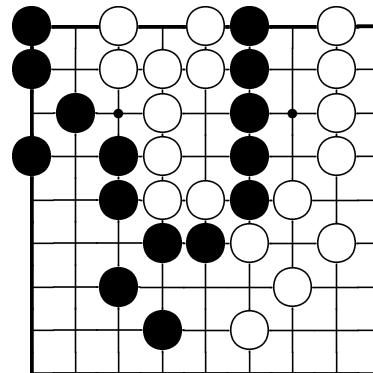
Where is White weak? Should Black attack with A, B or C?



Which is the weak group Black needs to defend?



Find a move that helps White's weakest stone or stones and attacks Black.

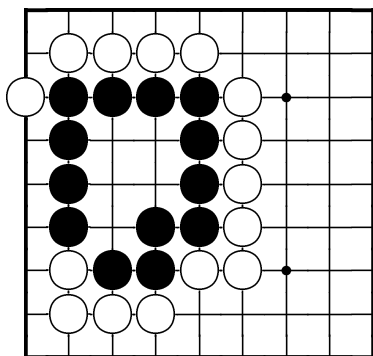


Black to play. Which of the two weak groups will die first?

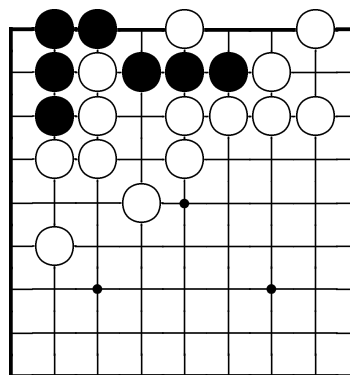
Name: _____

Living and dead groups, part 1

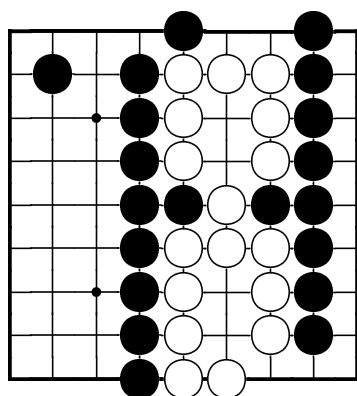
British Go Association certificate level 2, sheet 10



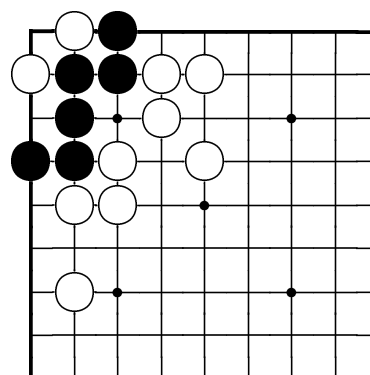
White to play and kill the black group.



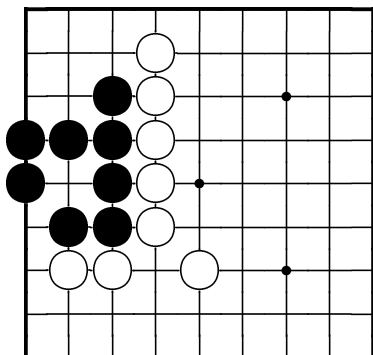
Black to play and make the black group live.



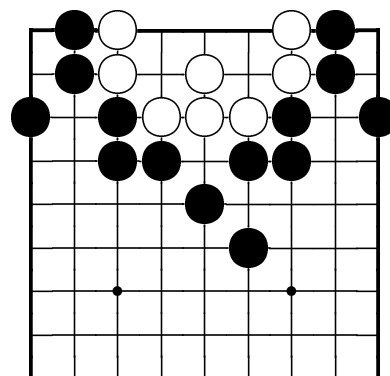
White to play and make the white group live.



White to play and kill the black group.



White to play and kill the black group.

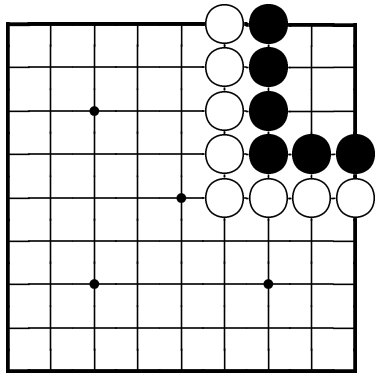


Black to play and kill the white group.

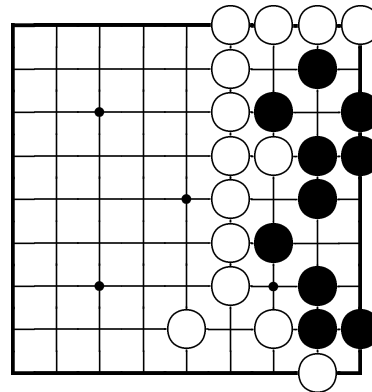
Name: _____

Living and dead groups, part 2

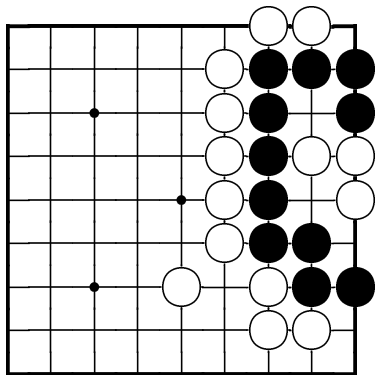
British Go Association certificate level 2, sheet 11



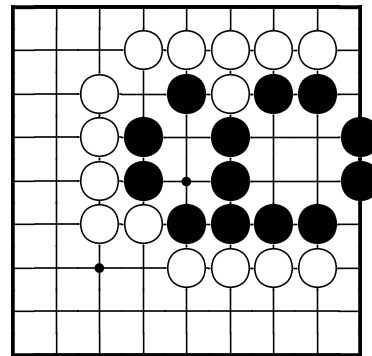
White to play and kill the black group (without starting a ko).



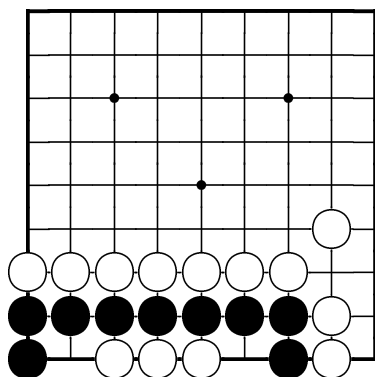
White to play and kill the black group.



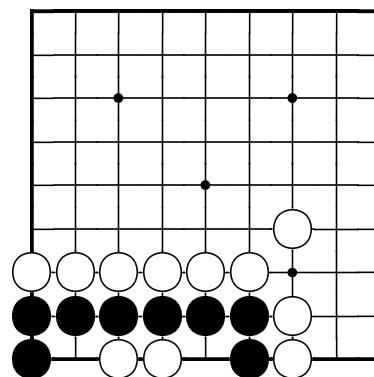
White to play and kill the black group.



White to play and kill the black group.



Is the black group alive, dead or what?



Is the black group alive, dead or what?

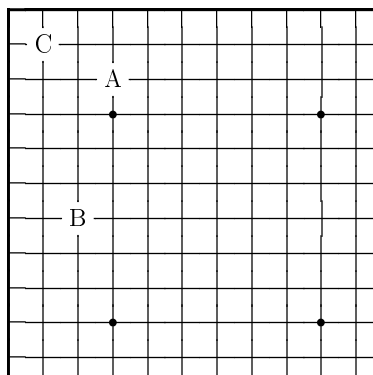
Certificate Level 3
Puzzle Sheets

British Go Association

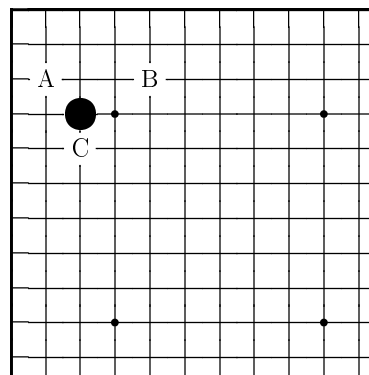
Name: _____

Opening ideas

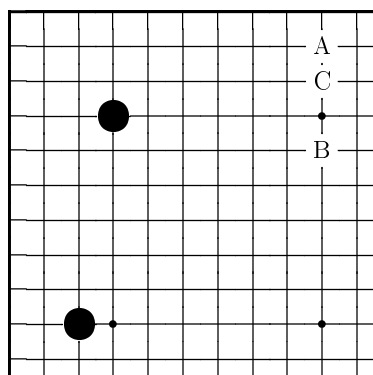
British Go Association certificate level 3, sheet 1



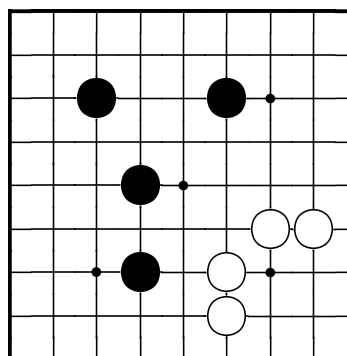
Which of A, B or C would be a good first move?



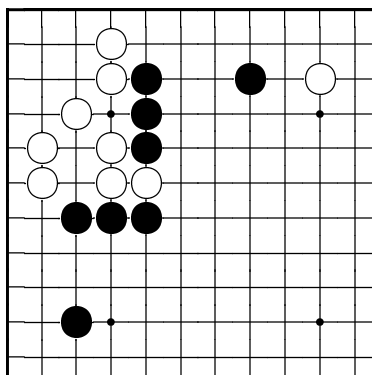
Which of A, B or C would be best for White?



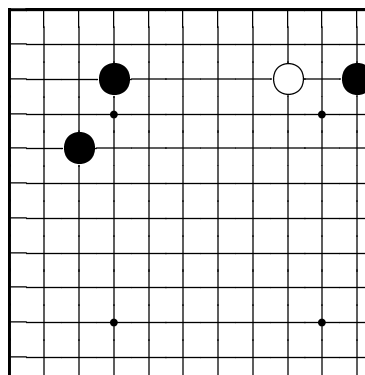
Which of A, B or C would be best for White?



Who has the better position?



White to play.

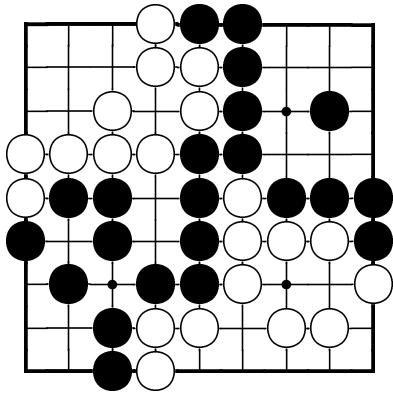


Where is it best to play for Black? Or for White?

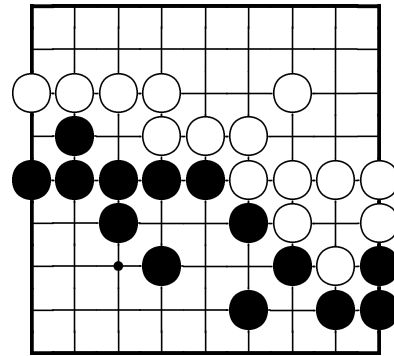
Name: _____

Endgame positions

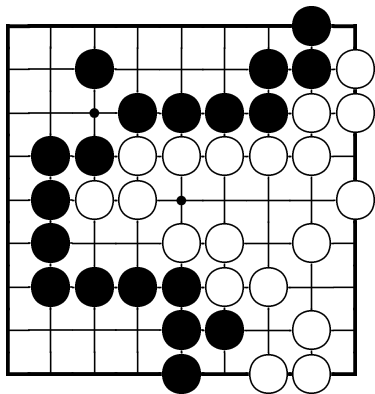
British Go Association certificate level 3, sheet 2



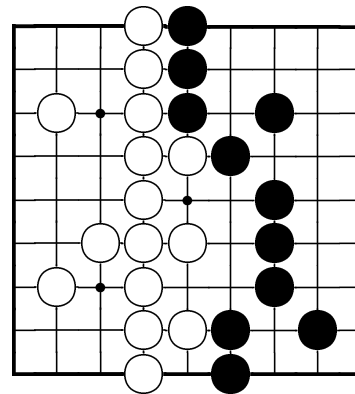
There's only one worthwhile place for Black to play. Where is it?



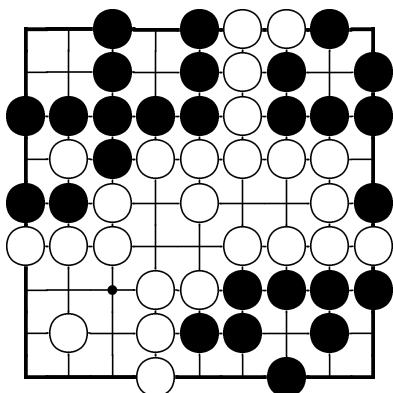
There's only one worthwhile place for Black to play. Where is it?



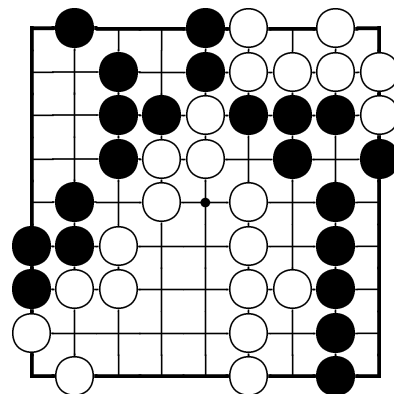
Is this game finished, apart from neutral points?



Is this game finished, apart from neutral points?



Black to play. Where is biggest?

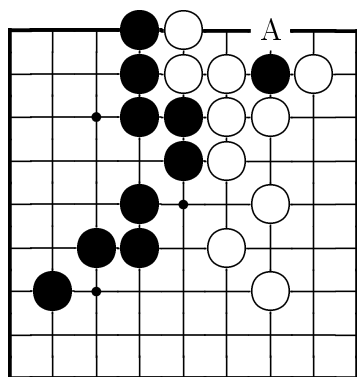


Which two points are worth playing and which should White play first?

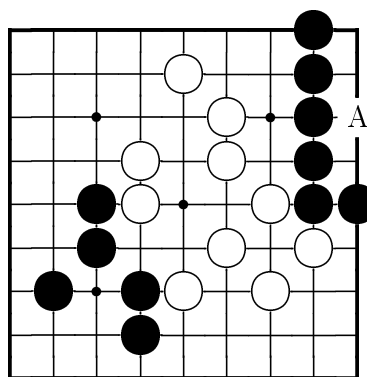
Name: _____

Wasted moves and necessary moves

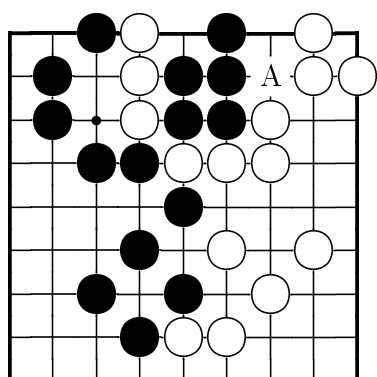
British Go Association certificate level 3, sheet 3



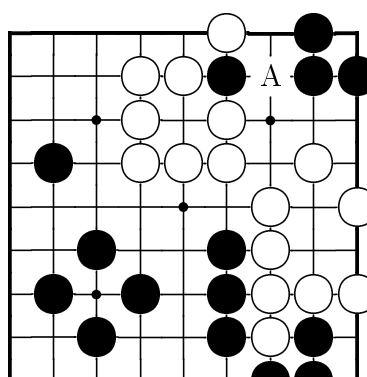
Would it be good or bad for White to play at A?



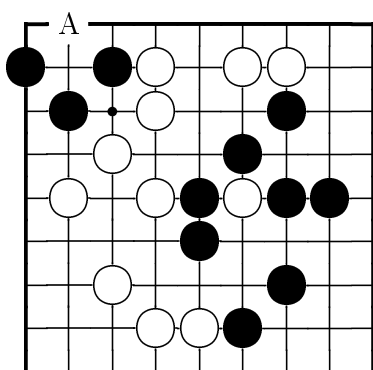
Would it be good or bad for Black to play at A?



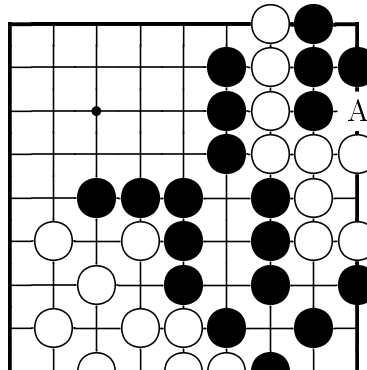
Would it be good or bad for White to play at A?



Would it be good or bad for Black to play at A?



Would it be good or bad for White to play at A?

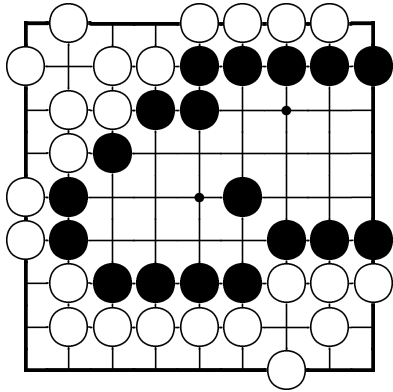


Would it be good or bad for White to play at A?

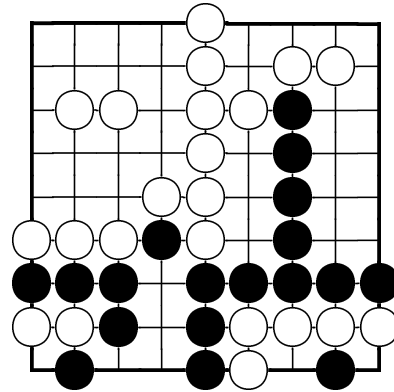
Name: _____

When to defend

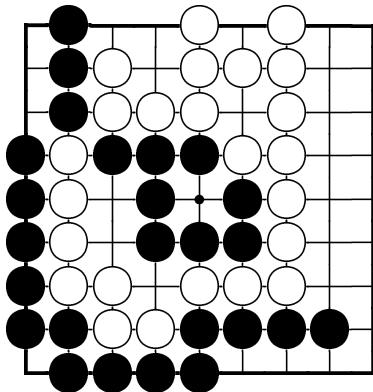
British Go Association certificate level 3, sheet 4



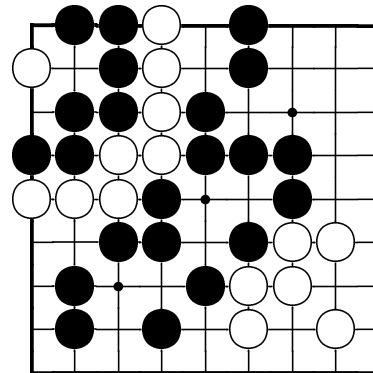
Black to play where?



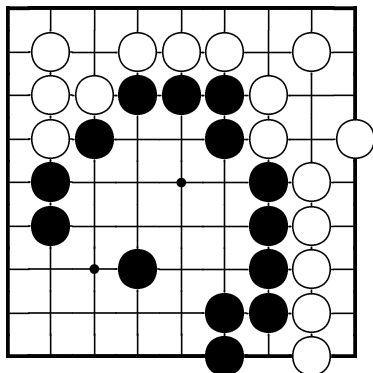
Black to play where?



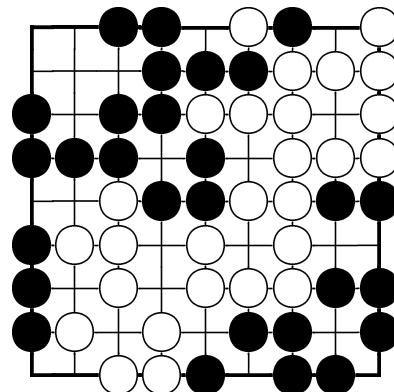
White to play where?



White to play where?



Black to play where?

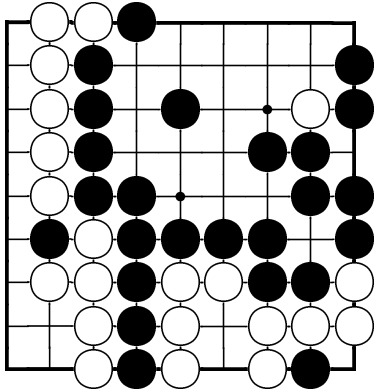


Black to play where?

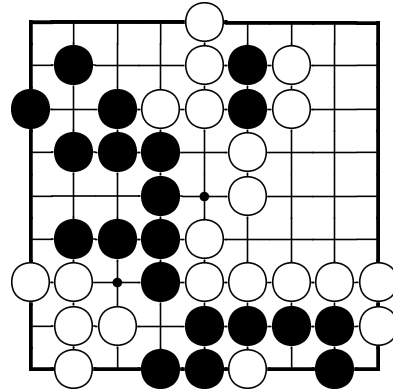
Name: _____

More cutting and connecting

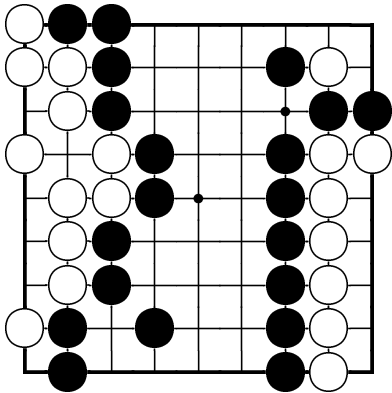
British Go Association certificate level 3, sheet 5



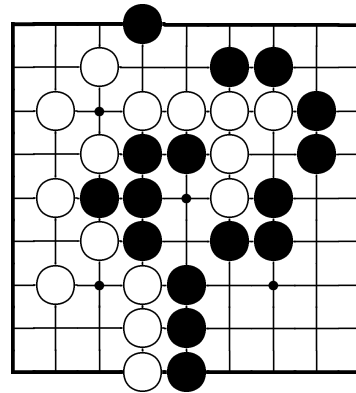
Black to play where?



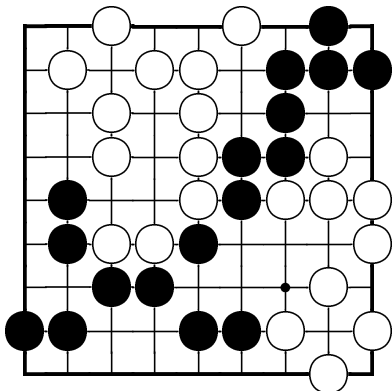
White to play where?



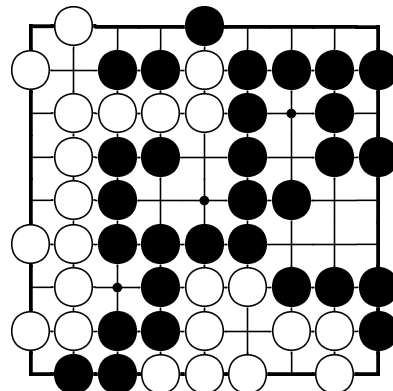
White to play where?



White to play where?



Black to play where?

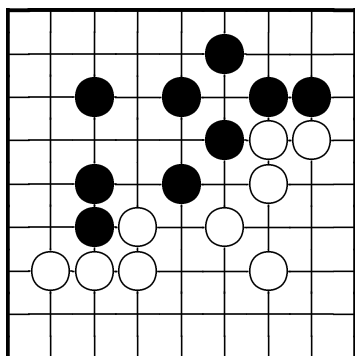


White to play where?

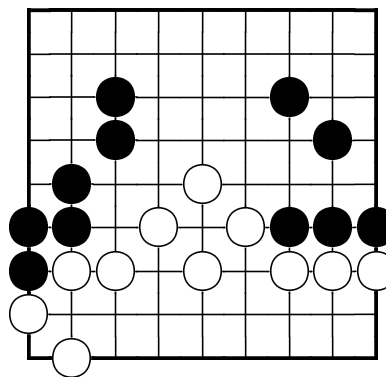
Name: _____

Keeping your territory

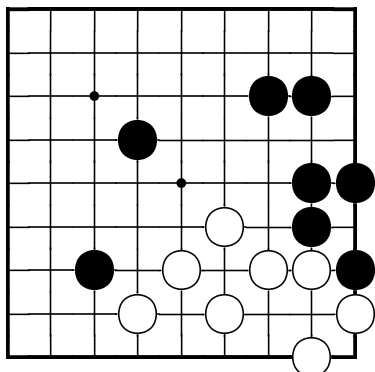
British Go Association certificate level 3, sheet 6



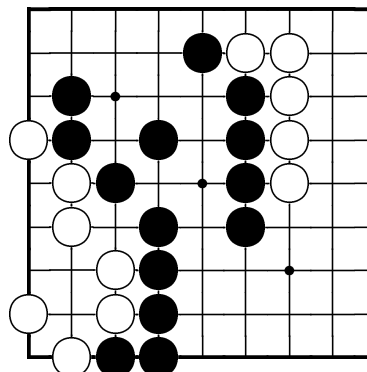
Where should Black play to defend the most territory?



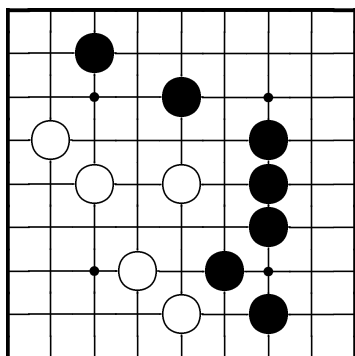
Where should Black play to defend the territory at the top?



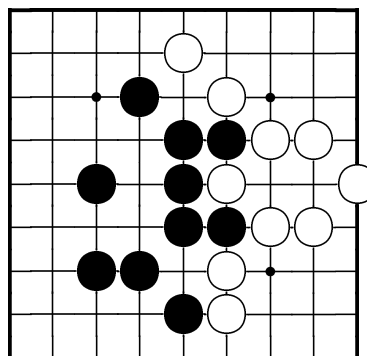
Whereabouts should Black play defensively?



Whereabouts should Black play next?



Whereabouts should Black play next?

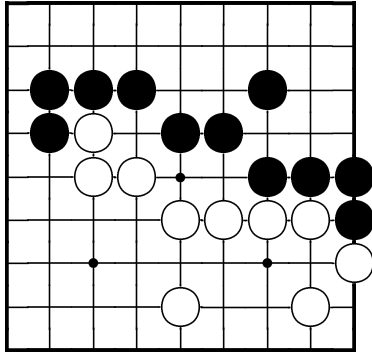


Whereabouts does Black need to play next?

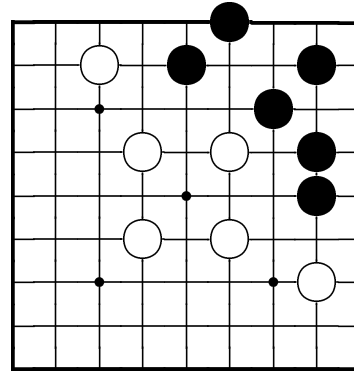
Name: _____

Stealing territory

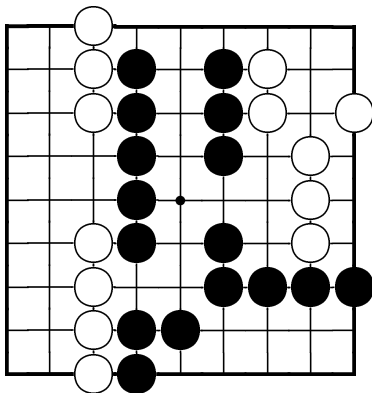
British Go Association certificate level 3, sheet 7



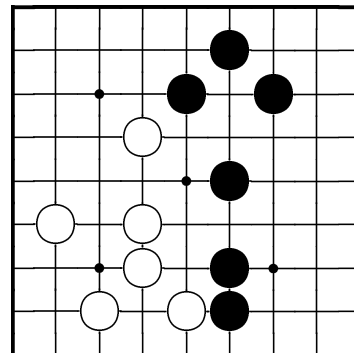
Black to play and reduce White's territory.



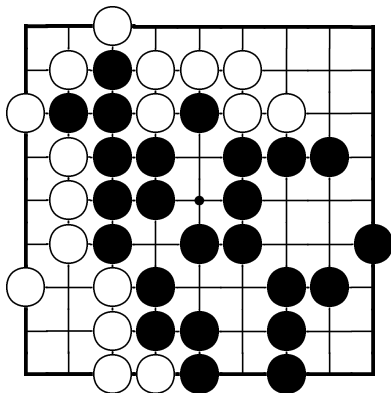
Suggest a place for Black to play.



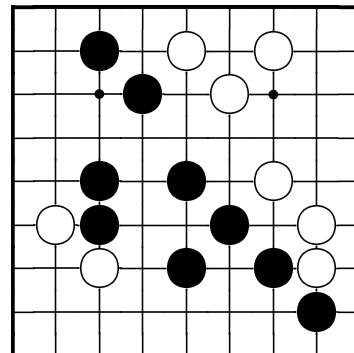
Whereabouts should Black play?



In what area should Black play next?



Whereabouts should Black play?

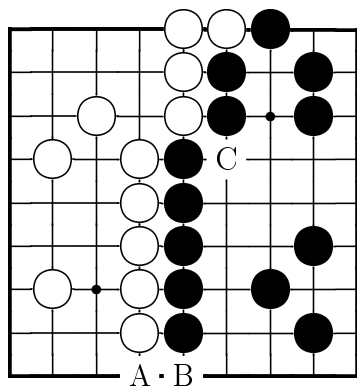


Suggest a place for White to play.

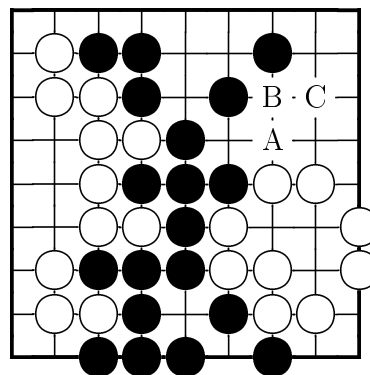
Name: _____

Big and small, part 1

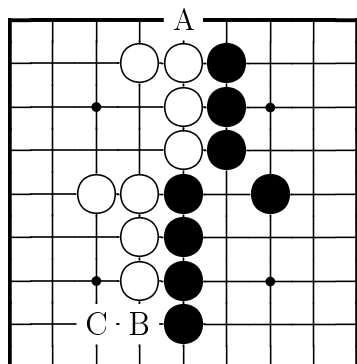
British Go Association certificate level 3, sheet 8



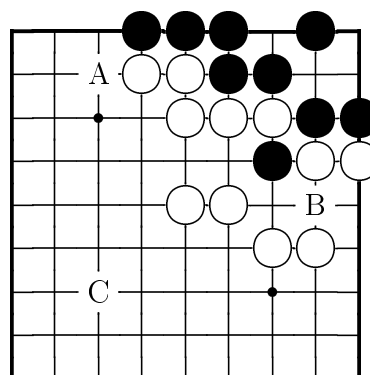
Should Black play A, B or C?



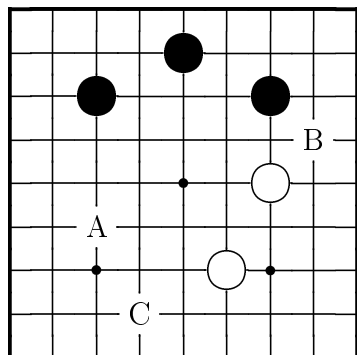
Should White play A, B or C?



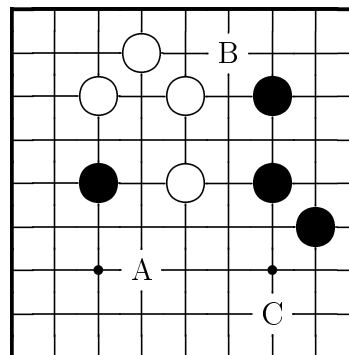
Should Black play A, B or C?



Should Black play A, B or C?



Should White play A, B or C?

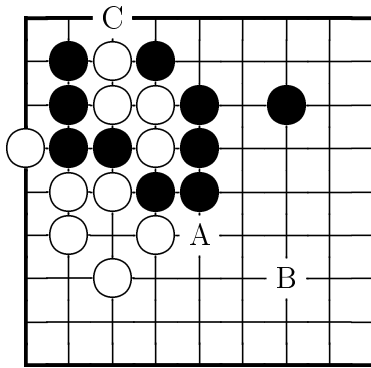


Should Black play A, B or C?

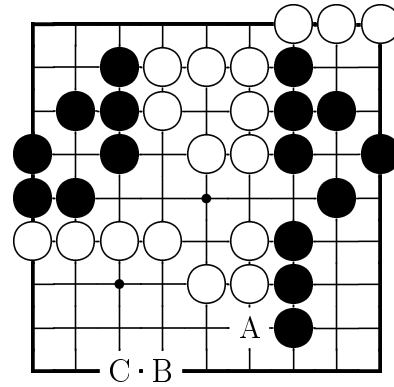
Name: _____

Big and small, part 2

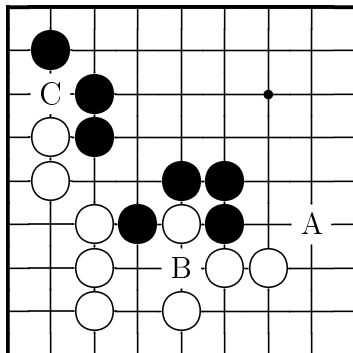
British Go Association certificate level 3, sheet 9



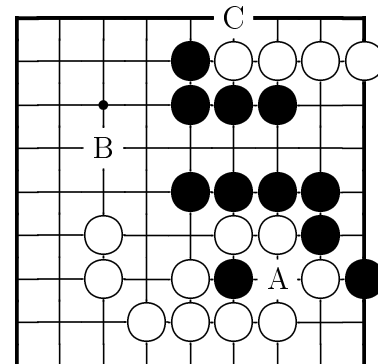
Should White play A, B or C?



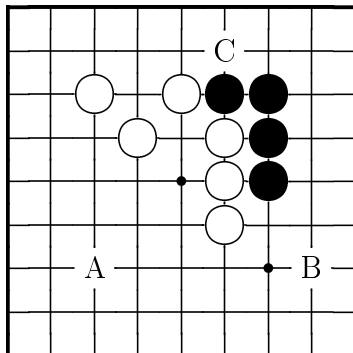
Should Black play A, B or C?



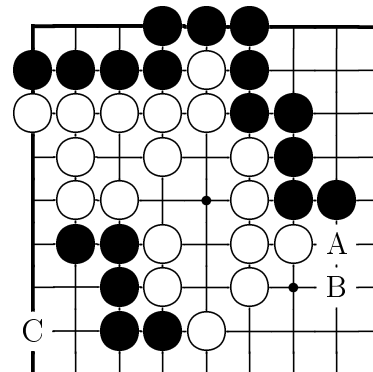
Should Black play A, B or C?



Should Black play A, B or C?



Should Black play A, B or C?

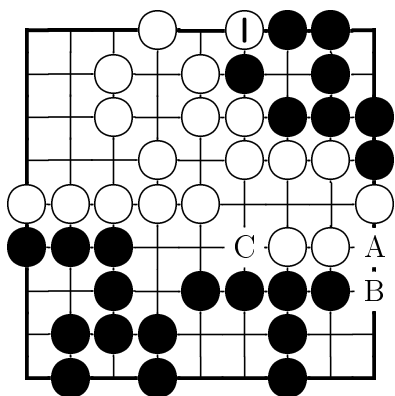


Should Black play A, B or C?

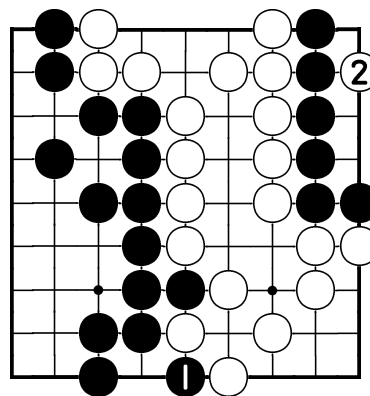
Name: _____

Ko fights

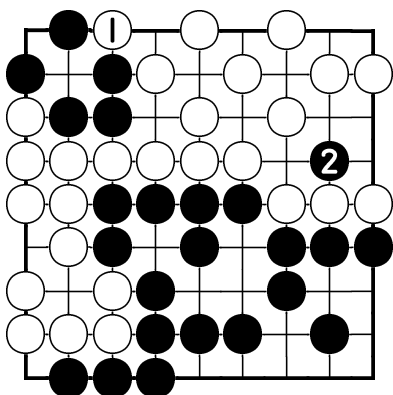
British Go Association certificate level 3, sheet 10



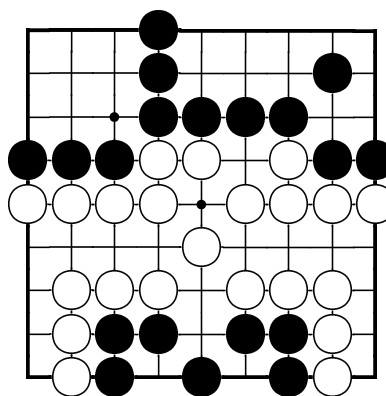
White played 1, taking a stone. Should Black play A, B or C?



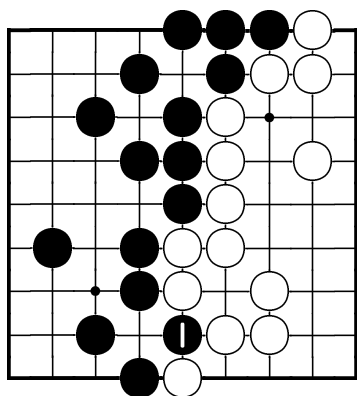
Black took at 1; then White played at 2. Where does Black play now?



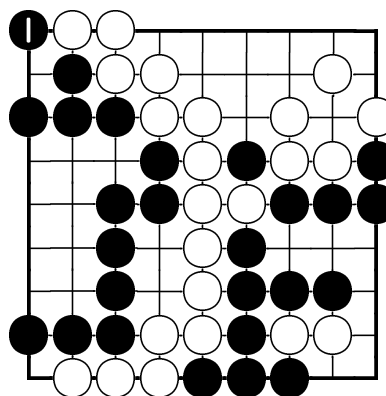
White took at 1; then Black played at 2. Where does White play now?



Where should White play to start a ko, and why?



Black just captured at 1. Find a ko threat for White.

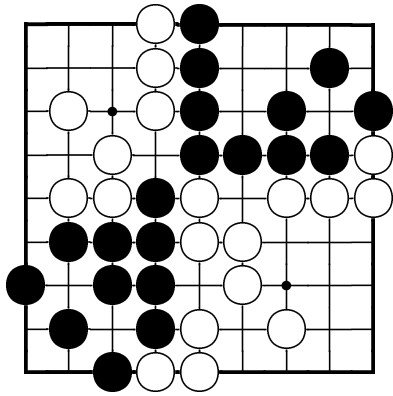


Black just captured at 1. Find a ko threat for White.

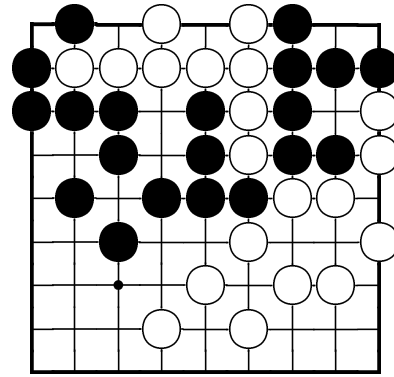
Name: _____

Whole board situations

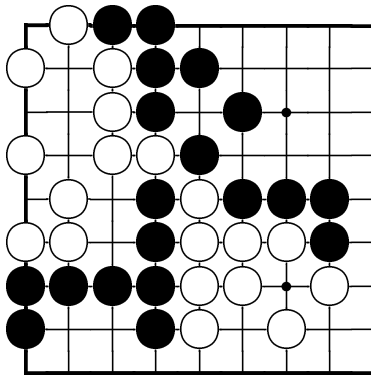
British Go Association certificate level 3, sheet 11



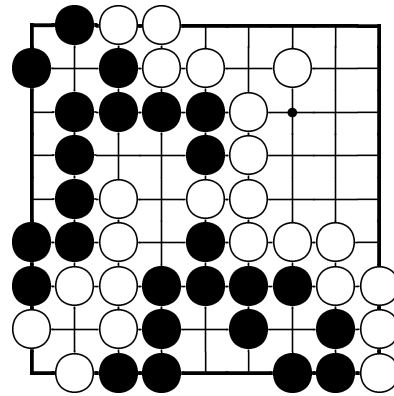
White to play; what is happening?



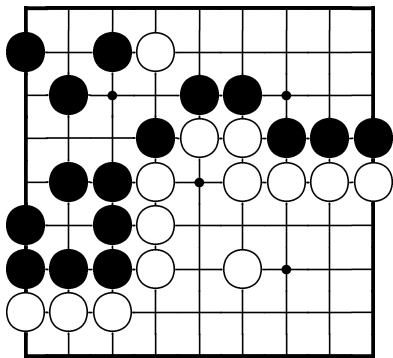
Black to play; what is happening?



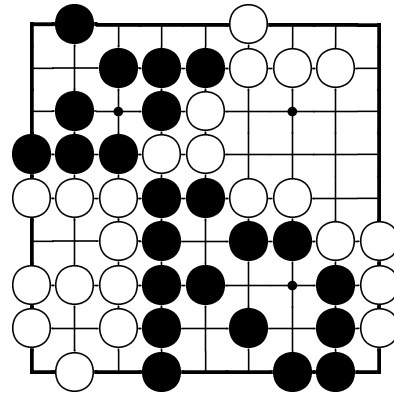
Black to play; what is happening?



White to play; what is happening?



Black to play; what is happening?



Black to play; what is happening?